



City of South San Francisco

CONSTRUCTION CONNECTION

New residential and commercial developments are coming to South San Francisco. Have questions about ongoing or future construction?

You have three ways to get your questions answered about construction in South San Francisco.

1. **Phone:** Contact our Construction Hotline: **(650) 829-4600**. You can leave a message and your call will be returned within 48 hours.
2. **Email:** Email us your question to Construction@ssf.net.
3. **Website:** The City website is frequently updated with the latest construction information available, along with an interactive map identifying projects going on in the City. Check it out: construction.ssf.net.

Follow the Economic and Community Development Facebook page to receive updates on projects in the City.

[Like us on Facebook!](#)

DOWNTOWN CONSTRUCTION IN SOUTH SAN FRANCISCO

Pinefino Project (100 Baden Avenue)



On or about May 3, the contractor for Pinefino will begin undergrounding of overhead utilities on Cypress between Grand and Third Lane.

To minimize disruption to neighboring businesses, the work will take place Monday - Friday from **10:00 p.m. to 5:00 a.m.** Cypress will be closed during this time. This work is expected to take approximately two weeks and is weather dependent.

Cypress between Baden and Third Lane is closed daily at 6:00 a.m. and re-opens by 11:00 a.m.

About this project:

This new seven story, two-building residential development with 260 units at the corner of Miller and Airport is anticipated to be complete by Q1 2019. (Rendering below)



Cadence Project (Airport Blvd. @ Miller Ave.)



On Monday, May 8, the contractor for the Cadence project (formerly called the Sares Regis project) will begin major utility work including undergrounding of overhead utilities on Miller between Airport Blvd. and Cypress.

Due to the number of utilities affected and their location, Miller between Airport and Cypress will close. This closure will take effect **Monday, May 8**

to Friday, June 30, 2017.

This project also includes ongoing long-term sidewalk closures on Airport Blvd., adjacent to the site, as well as removal of the parking lane in the same area.

About this project:

This new seven story, two-building residential development with 260 units at the corner of Miller Avenue and Airport Boulevard is anticipated to be complete by Q1 2019. (Rendering below)



OTHER CONSTRUCTION PROJECTS IN SOUTH SAN FRANCISCO

Popeye's is coming to town! Last tenant to fill 180 S. Airport Blvd space



This retail space - home to Togos and Dunkin Donuts will soon have a third tenant - [Popeye's Louisiana Kitchen](#). Construction of interior improvements are scheduled to begin later this month.

Popeye's is anticipated to open by the end of the year.

213 E. Grand Avenue - Merck

Work for the new [Merck](#) building is well underway with construction of footing and foundation to support the new building, which is expected to open early 2019.

A new nine-story, 291,000 square foot office, research, and development building will house pharmaceutical



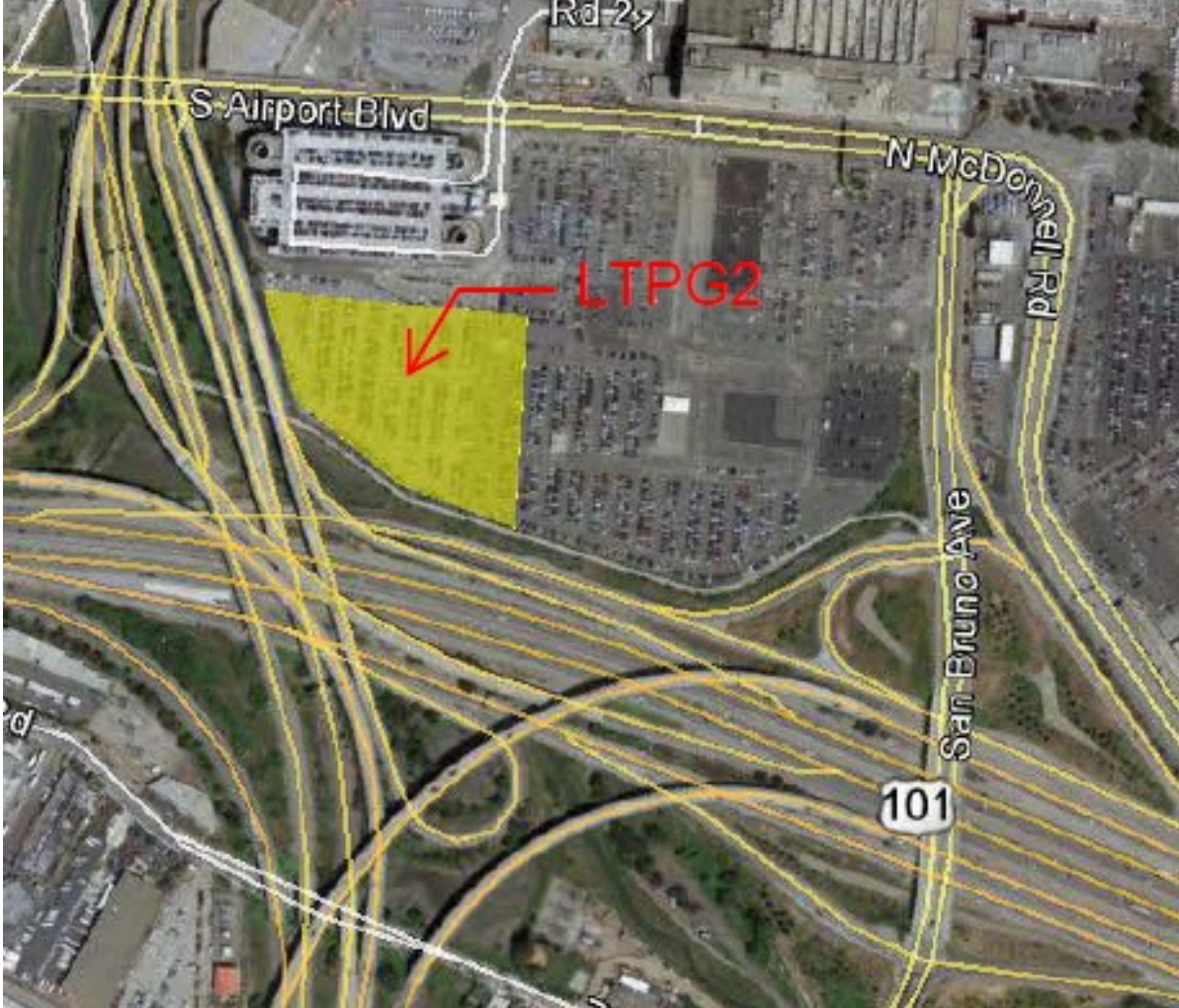
company, Merck. Construction could begin by the end of 2017. Alexandria Real Estate Equities will develop and operate this nine-story building, which will serve as Merck's West Coast research facility. Below is a future rendering of this project.

According to the *San Francisco Business Times*, this multi-disciplinary discovery research facility will accommodate more than 300 scientists and support research

spanning exploratory biology through early clinical development. The building is being custom designed with an open atmosphere that encourages collaboration and team work. The site will also have a large auditorium to provide space for nearby academics, scientists and entrepreneurs to convene and engage in scientific dialogue.



Long Term Parking Garage at SFO



FlySFO started a pile driving operation for the new Long Term Parking Garage at SFO, which will continue until April 25th. The work hours for this project are from 7:00 a.m. to 5:00 p.m.

Please contact the Noise Abatement Office if there are any noise concerns or complaints at (650) 821-5100, or contact them via [email](#).

There are several projects in the City led by the South San Francisco Unified School District associated with Measure J.

For more information on these projects, please click [here](#), which will take you to the school district website.

City of South San Francisco | leslie.arroyo@ssf.net | <http://www.ssf.net>

